




Autumn Winter Collection 2026

LADIES | HERITAGE COLLECTION | CHILDREN



Whiterocks Beach, County Antrim, Northern Ireland



Enjoy the simple pleasures, whatever the weather

Style led weatherproof clothing for daily life and weekend adventures, whatever the weather.

We believe that you don't need to sacrifice style for practicality. Each of our coats and jackets are as much at home on the high street or at the school gates as they are on a long beach walk in coastal drizzle.

Ready and waiting for any weather that you encounter in daily life, everyday adventures and weekend escapes.

live simple. live happy



FALLON

COTTON RICH WATERPROOF COAT

Faux Fur Lined Hood and Quilted Lining

5000 WP | 5000 BR

Centre Back Length: 94cm, based on UK 10

Damson | Olive | Navy

Sizes: 8-20



SCARLET

POLYESTER WATERPROOF COAT

Faux Fur Lined Upper and Quilted Lined Lower

5000 WP | 5000 BR

Centre Back Length: 84cm, based on UK 10

Wild Rose | Sage



IMOGEN

POLYESTER WATERPROOF COAT
Soft Check Lining | 120g Padding
3000 WP | 3000 BR
Centre Back Length: 99cm, based on UK 10
Moss | Bluestone | Wild Rose
Sizes: 8-20



TESS

POLYESTER WATERPROOF COAT
Soft Check Lining | 120g Padding
3000 WP | 3000 BR
Centre Back Length: 77cm, based on UK 10
Navy | Duck Egg | Damson
Sizes: 8-20

TEREZITA WEARS

TESS

DUCK EGG | POLYESTER WATERPROOF COAT

MODEL IS 5'7FT | WEARS A SIZE 10




TEREZITA WEARS

MARGOT

BERRY | PADDED COAT

MODEL IS 5'7FT | WEARS A SIZE 10





POPPY WEARS

SAVANNAH

DAMSON | LONG LINE PADDED COAT

LH SCARF | SEA KELP ROSE COCOA
HANNAH HAT | WILD ROSE

MODEL IS 5'8FT | WEARS A SIZE 10



SAVANNAH

LONG LINE PADDED COAT

100% Repreve Recycled Synthetic Fill | 450g
Centre Back Length: 108cm, based on UK 10
Damson | Duck Egg
Sizes: 8-20



MARGOT

PADDED COAT

100% Repreve Recycled Synthetic Fill | 280g
Centre Back Length: 69cm, based on UK 10
Bluestone | Pale Pink | Berry
Sizes: 8-20



LOIS

PADDED COAT

100% Repreve Recycled Synthetic Fill | 340g

Centre Back Length: 88cm, based on UK 10

Kale | Cream | Wild Rose | Navy | Sage

Sizes: 8-20

LUCY WEARS

LOIS

WILD ROSE | PADDED COAT

HANNAH HAT | IRISH CREAM

MODEL IS 5'8FT | WEARS A SIZE 10





LAUREL

PADDED COAT

100% Repreve Recycled Synthetic Fill | 300g
Centre Back Length: 88cm, based on UK 10
Moss | Cocoa | Berry | Bluestone
Sizes: 8-20

**LAUREL GILET****PADDED GILET**

100% Repreve Recycled Synthetic Fill | 160g

Berry | Duck Egg | Cocoa

Sizes: 8-20

**LH SCARF****100% ACRYLIC**Duck Egg Berry Navy | Sea Kelp Rose Cocoa | Sage Rust Navy
One Size**HANNAH HAT****100% ACRYLIC CABLE KNIT HAT**Irish Cream | Wild Rose | Cocoa
One Size



COAST

POLYESTER BONDED FLEECE | 410g

Berry | Moss

Sizes: 8-20



COBH

POLYESTER BONDED FLEECE | 410g

Duck Egg | Cocoa | Pink

Sizes: 8 - 20



CARYS

QUILTED JACKET

78% Cotton 22% Polyester

Wild Rose | Cappuccino

Sizes: 8-20



CAMERON

QUILTED QUARTER ZIP

78% Cotton 22% Polyester

Irish Cream | Navy

Sizes: 8-20



SHORE II

COTTON RICH JERSEY

83% Cotton | 17% Polyester | 320g

Bluestone and Pale Blue Stripe | Damson

Sizes: 8-20



HAVEN II

COTTON RICH JERSEY

83% Cotton | 17% Polyester | 320g

Berry and Pale Pink Stripe | Bluestone

Sizes: 8-20



ROWAN

COTTON RICH JERSEY

83% Cotton | 17% Polyester
Light Sage | Berry
Sizes: 8-20



LUISA

100% Acrylic
Berry | Cocoa Cream Stripe | Wild Rose
Sizes: 8-20



CAUSEWAY LONG SLEEVE

COTTON STRETCH JERSEY

95% Cotton 5% Spandex | 200g

Navy Sage Blue Stripe | Wild Rose Pink Berry Stripe | Duck Egg Pink Stripe

Sizes: 8-20



SORCHA

COTTON STRETCH JERSEY

95% Cotton 5% Spandex | 200g

Moss Stripe | Cocoa Cream Stripe | Berry Pale Pink Stripe

Sizes: 8-20



SLOANE

COTTON GILET

100% Cotton Outer | 100% Polyester Check Lining

Navy | Coconut

Sizes: 8-20



LEONA

DENIM SHIRT

100% Cotton

Washed Denim

Sizes: 8-20

POPPY WEARS

COBH

COCOA

MODEL IS 5'8FT | WEARS A SIZE 10



LUCY WEARS

LUISA

BERRY

MODEL IS 5'8FT | WEARS A SIZE 10



ZARA WEARS

OUTBACK

FAWN | FULL LENGTH RAINCOAT

MODEL IS 5'9FT | WEARS A SIZE 10

MATTHEW WEARS

STOCKMAN

CHOCOLATE | MENS RAINCOAT

YORK

CHOCOLATE | MENS RAIN HAT

MODEL IS 6'2FT | WEARS A SIZE L



THE *Heritage* COLLECTION

CLASSIC COUNTRY WEAR

Our Heritage Collection has been designed with classic country styling in mind.

Drawing on the traditions of old, this hardy collection of waterproof coats have all the features you need to enjoy leisurely nature walks in the beautiful countryside, local woodlands or simply along your favourite beach.

Ready for cold windswept, rainy days: you can enjoy the simple, unhurried moments and discover the beauty in your surroundings, whatever the weather.



OUTBACK FULL LENGTH | OUTRIDER 3/4 LENGTH

POLYESTER PONGEE | WOVEN CHECK LINING
10,000 WP

Outback - Centre Back Length: 122cm | Outrider - Centre Back Length: 92cm, both based on UK 10
Fawn | Plum | Nightshade | Black | Deep Sea | Fern
Sizes: 6-24



STORM

POLYESTER PONGEE | WOVEN CHECK LINING
10,000 WP

Fawn | Plum | Nightshade | Fern | Deep Sea | Black
Sizes: S | M | L



OUTBACK FULL LENGTH | OUTRIDER 3/4 LENGTH

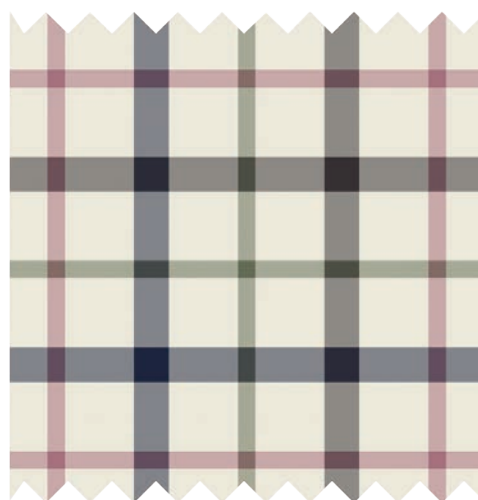
POLYESTER PONGEE | UPDATED WOVEN CHECK LINING

10,000 WP

Outback - Centre Back Length: 122cm | Outrider - Centre Back Length: 92cm, both based on UK 10

Wild Rose | Sage | Chocolate

Sizes: 6-24



STORM

POLYESTER PONGEE | UPDATED WOVEN CHECK LINING

10,000 WP

Wild Rose | Sage | Chocolate

Sizes: S | M | L

UPDATED WOVEN CHECK LINING

ACRYLIC WOVEN CHECK LINING



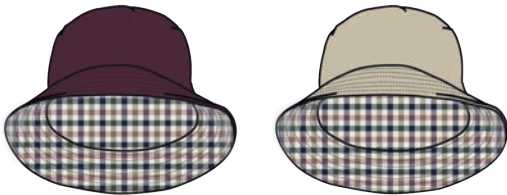
HARPER

POLYESTER WATERPROOF TRENCH COAT | WOVEN CHECK LINING
5000 WP | 5000 BR
Centre Back Length: 117cm, based on UK 10
Damson | Stone
Sizes: 8-20



HERITAGE SCARF

100% POLYESTER
Navy Pink Cocoa Check
One Size



EDIE

REVERSIBLE HAT | POLYESTER | WOVEN CHECK LINING
Outer - 5000 WP | 5000 BR
Damson | Stone
Sizes: S | M | L

A woman with long dark hair is smiling and standing in front of a rustic stone wall. She is wearing a long maroon trench coat over a light-colored striped top and pink trousers. In the background, there is a white house with green trim and a stone wall.

POPPY WEARS

HARPER

DAMSON | WATERPROOF TRENCH

MODEL IS 5'8FT | WEARS A SIZE 10

THE
Heritage
COLLECTION



DEVON

POLYESTER WATERPROOF COAT | WOVEN CHECK LINING

5000 WP | 5000 BR

Centre Back Length: 72cm, based on UK 10

Navy | Olivine

Sizes: 8-20



KENDAL

POLYESTER PONGEE | WOVEN CHECK LINING

10,000 WP

Centre Back Length: 77cm, based on UK 10

Nightshade | Plum | Fawn | Forest | Berry

Sizes: 8-20



AVON
<p>BONDED WATERPROOF FLEECE 450g</p> <p>5000 WP</p> <p>Maroon Navy</p> <p>Sizes: 8-20</p>



RUTA WEARS

AVON

BONDED WATERPROOF FLEECE

MODEL IS 5'7FT | WEARS A SIZE 10

RUTA WEARS

OUTRIDER

DEEP SEA | WATERPROOF COAT

HANNAH HAT | IRISH CREAM

MODEL IS 5'7FT | WEARS A SIZE 10

THE
Heritage
COLLECTION

MATTHEW WEARS

STOCKMAN

DUFFEL | MENS RAINCOAT

YORK

DUFFEL | MENS RAIN HAT

MODEL IS 6'2FT | WEARS A SIZE L

THE
Heritage
COLLECTION



STOCKMAN

POLYESTER PONGEE | WOVEN CHECK LINING

10,000 WP

Centre Back Length: 110cm, based on M

Deep Night | Duffel | Chocolate

Sizes: S | M | L | XL | XXL | XXXL



YORK

POLYESTER PONGEE | WOVEN CHECK LINING

10,000 WP

Deep Night | Duffel | Chocolate

Sizes: S | M | L | XL



OXFORD

POLYESTER PONGEE | WOVEN CHECK LINING

10,000 WP

Centre Back Length: 80cm, based on M

Navy | Chocolate | Hunter Green

Sizes: S | M | L | XL | XXL



WINDSOR

BONDED WATERPROOF FLEECE

5000 WP

Navy | Hunter Green

Sizes: S | M | L | XL | XXL





KIDS COLLECTION

Our kids' collection offers a beautiful range of raincoats, cosy fleeces and everyday tops and tees.

Play doesn't have to stop if the clouds roll in. All of our kids' raincoats are made from the same smart fabrics as our adults' range, ensuring they are waterproof, windproof and breathable.

Our Little Lighthouse collections are not only practical they also offer beautiful bright colours and playful hand-drawn prints to brighten up any season.



JCB



KENNA

QUILTED JACKET

Floral Print

Sizes: 1-2 yrs to 7-8 yrs



AMBER REVERSIBLE

REVERISBLE FLEECE GILET

Teal Floral Print

Sizes: 1-2 yrs to 7-8yrs



CASSIE

POLYESTER FLEECE | 320g

Teal

Sizes: 1-2 yrs to 7-8 yrs



FLORA

COTTON RICH JERSEY

83% Cotton 17% Polyester | 320g

Pastel Teal

Sizes: 1-2 yrs to 7-8 yrs



CAUSEWAY LONG SLEEVE

COTTON STRETCH JERSEY

95% Cotton 5% Spandex | 200g

Pastel Teal

Sizes: 1-2 yrs to 7-8 yrs



ERICA

COTTON RICH DRESS

95% Cotton 5% Spandex | 100% Cotton

Pastel Teal Floral Print | Washed Denim

Sizes: 1-2 yrs to 7-8yrs



MOLLIE

COTTON STRETCH JERSEY

95% Cotton 5% Spandex | 200g

Pastel Teal Floral Print

Sizes: 1-2 yrs to 7-8 yrs



BOBBIE

100% ACRYLIC

Pastel Teal Floral Print

Sizes: 2-4 yrs and 5-10 yrs



FREYA

POLYESTER WATERPROOF COAT | FLEECE LINING

3000 WP | 3000 BR

Cowgirl Print

Sizes: 1-2 yrs to 7-8 yrs



ALEX

POLYESTER WATERPROOF GILET | FLEECE LINING

3000 WP | 3000 BR

Cowgirl Print

Sizes: 1-2 yrs to 7-8 yrs



AMBER

PADDED GILET

100% Repreve Recycled Synthetic Fill

Coconut

Sizes: 1-2 yrs to 7-8 yrs



CASSIE

POLYESTER FLEECE | 320g

Rose

Sizes: 1-2 yrs to 7-8 yrs



CAUSEWAY LONG SLEEVE

COTTON STRETCH JERSEY

95% Cotton 5% Spandex | 200g

Cowgirl Print

Sizes: 1-2 yrs to 7-8 yrs



MOLLIE

COTTON STRETCH JERSEY

95% Cotton 5% Spandex | 200g

Rose Star Print

Sizes: 1-2 yrs to 7-8 yrs



BOBBIE

100% ACRYLIC

Cowgirl Print

Sizes: 2-4 yrs and 5-10 yrs



FREYA

POLYESTER WATERPROOF COAT | FLEECE LINING

3000 WP | 3000 BR

Country Cottage Print | Pink Flower Print

Sizes: 1-2 yrs to 7-8 yrs



JAMIE

POLYESTER WATERPROOF PUDDLESUIT | FLEECE LINING

3000 WP | 3000 BR

Pink Flower Print

Sizes: 1-2 yrs to 5-6 yrs

GRACIE

POLYESTER FLEECE | 320g

Pink

Sizes: 1-2 yrs to 7-8 yrs



BONNIE

PADDED COAT

100% Repreve Recycled Synthetic Fill

Pink

Sizes: 1-2 yrs to 7-8 yrs



CAUSEWAY LONG SLEEVE

COTTON STRETCH JERSEY

95% Cotton 5% Spandex | 200g

Country Cottage

Sizes: 1-2 yrs to 7-8 yrs



BOBBIE

100% ACRYLIC

Fox Teal Print

Sizes: 2-4 yrs and 5-10 yrs



MOLLIE FLARE

COTTON STRETCH JERSEY

95% Cotton 5% Spandex | 200g

Pink Flower Print

Sizes: 1-2 yrs to 7-8 yrs



FINLAY

POLYESTER WATERPROOF JACKET | FLEECE LINING

3000 WP | 3000 BR

Woodland Print

Sizes: 1-2 yrs to 7-8 yrs



HUGO

OVERSHIRT

Soft Lime Cream Check

Sizes: 1-2 yrs to 7-8 yrs



MURRAY

POLYESTER FLEECE | 320g

Soft Lime

Sizes: 1-2 yrs to 7-8 yrs



OLIVER LONG SLEEVE

COTTON STRETCH JERSEY

95% Cotton 5% Spandex | 200g

Raccoon Print

Sizes: 1-2 yrs to 7-8 yrs



BOBBIE

100% ACRYLIC

Soft Lime

Sizes: 2-4 yrs and 5-10 yrs



BRODY

COTTON STRETCH JERSEY

97% Cotton 3% Spandex

Khaki

Sizes: 1-2 yrs to 7-8 yrs



FINLAY

POLYESTER WATERPROOF JACKET | FLEECE LINING

3000 WVP | 3000 BR

AW26 Farm Print

Sizes: 1-2 yrs to 7-8 yrs



JAMIE

POLYESTER WATERPROOF PUDDLESUIT | FLEECE LINING

3000 WVP | 3000 BR

AW26 Farm Print

Sizes: 1-2 yrs to 5-6 yrs



ABEL

PADDED GILET

100% Repreve Recycled Synthetic Fill

Red Tractor | Blue Tractor | Green Tractor

Sizes: 1-2 yrs to 7-8 yrs



JASPER

COTTON RICH JERSEY

83% Cotton 17% Polyester | 320g
Red Tractor | Blue Tractor | Green Tractor
Sizes: 1-2 yrs to 7-8 yrs



PIER LONG SLEEVE

100% COTTON PIQUE

Red Tractor | Blue Tractor | Green Tractor
Sizes: 1-2 yrs to 7-8 yrs



CHARLIE

100% COTTON CHAMBRARY

Navy Chambrary with Tractors

Sizes: 1-2 yrs to 7-8 yrs



BRODY

COTTON STRETCH JERSEY

97% Cotton 3% Spandex

Navy

Sizes: 1-2 yrs to 7-8 yrs



BOBBIE

100% ACRYLIC

Red Tractor | Blue Tractor | Green Tractor

Sizes: 2-4 yrs and 5-10 yrs





FINLAY

POLYESTER WATERPROOF JACKET | FLEECE LINING

3000 WP | 3000 BR

AW26 JCB

Sizes: 1-2 yrs to 7-8 yrs



ABEL

PADDED GILET

100% Reprave Recycled Synthetic Fill

JCB Fastrac

Sizes: 1-2 yrs to 7-8 yrs



JASPER

COTTON RICH JERSEY

83% Cotton 17% Polyester | 320g

JCB Fastrac

Sizes: 1-2 yrs to 7-8 yrs



PIER LONG SLEEVE

100% COTTON PIQUE

JCB Fastrac

Sizes: 1-2 yrs to 7-8 yrs



OLIVER LONG SLEEVE

100% COTTON PIQUE

JCB Fastrac

Sizes: 1-2 yrs to 7-8 yrs



BOBBIE

100% ACRYLIC

AW26 JCB Fastrac

Sizes: 2-4 yrs and 5-10 yrs



GEORGE JOGGER

COTTON RICH BRUSHED JERSEY | 320g

Navy JCB

Sizes: 1-2 yrs to 7-8 yrs



MAC
IN A SAC®

Synergy Gilet

KEY FEATURES

- Thermolite Fill
- Durable Water-Repellent (DWR) Finish
- YKK Zip
- Packable

**Ask your sales representative
about stocking our sister brand**

Contact

+44(0)2890 790 588 | sales@targetdry.com

Packable Performance Outerwear For Life On The Go

Distributed globally, Mac in a Sac has a reputation for developing technical, high performance packables.

Pack it for sport, travel and everyday adventures.

Bespoke display stands are available as part of the stockists' package to maximise profitability of retail floor space.



Unpack Adventure
macinasac.com



live simple. live happy

Target Dry Ltd, 8 Alexander Road, Castlereagh,
Belfast, N. Ireland, BT6 9FN

+44(0)28 9079 0588 | sales@targetdry.com