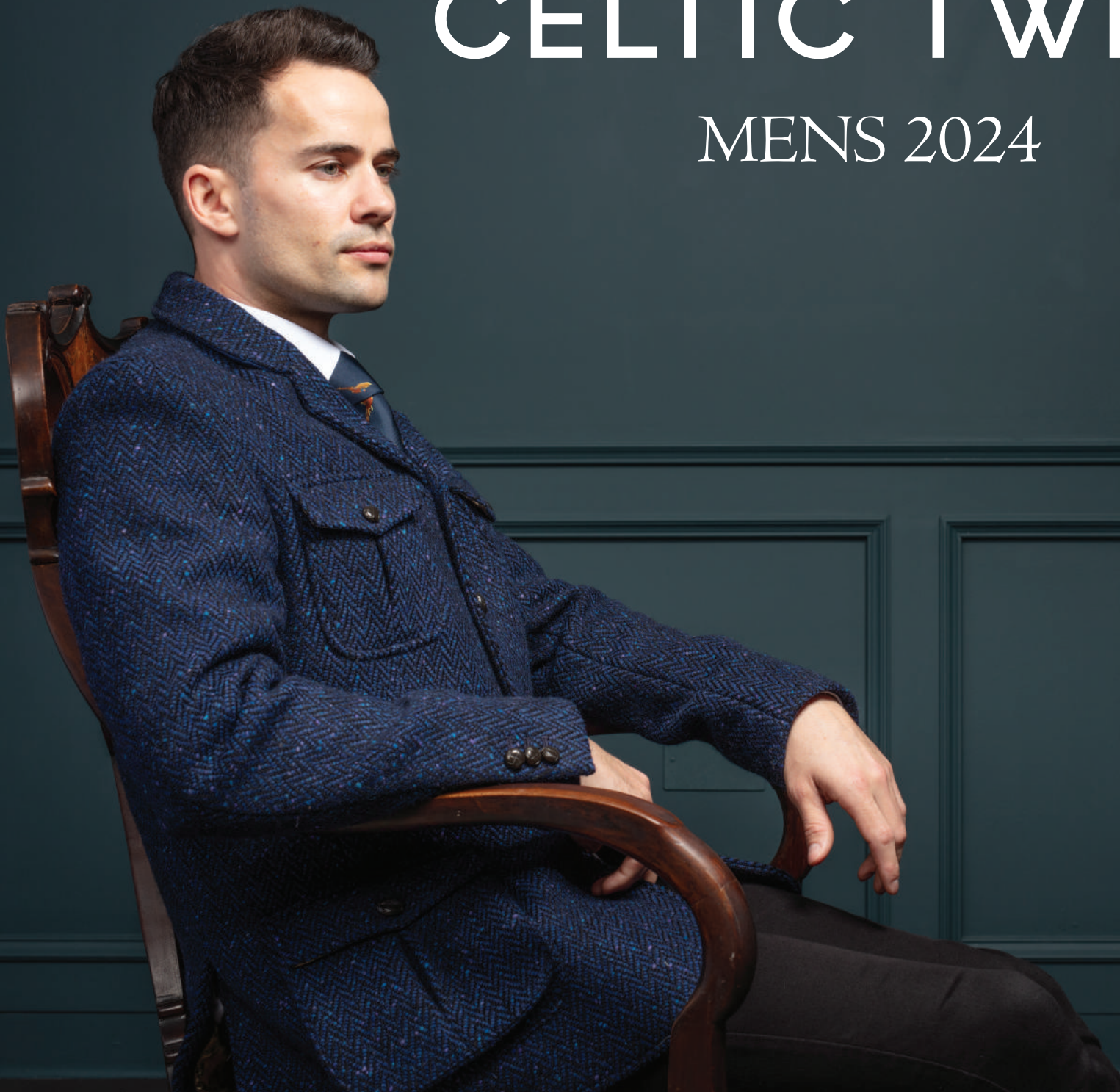


# CELTIC TWEED

MENS 2024



# ABOUT US

At Celtic Tweed we love tradition and embrace excellence.  
From our space in Balbriggan, Dublin we create uniquely designed  
garments that encapsulate a love of traditional tailoring.  
Our in house production allows us to provide more choice to you  
our buyers and ultimately your customers.

Fast fashion has taken over the world if it continues it could lead  
to the extinction of quality craftwork with  
ecologically disastrous effects on the environment.  
Slow fashion we believe is the only way forward.  
Our vision is to make timeless authentic pieces sustainably here.

We are proud to be a Guaranteed Irish Company and  
continue to work towards creating sustainable fashion  
that can be enjoyed for generations.

We hope our journey and efforts will help to save  
this beautiful planet. In the words of Seamus Heaney  
"Believe that a further shore is reachable from here."





# CONTENTS

## New Season

Hunting Tweed

Pg 4 - 8

Wool Herringbone Tweed

Pg 9 - 10

Lighter Wool City Tweed

Pg 11

## Core Collection

Coats

Pg 12

Jackets, Waistcoats & Suits

Pg 13 - 19

Shackletons & Bodywarmers

Pg 20 - 24

## Spring Summer Season

Cotton and Linen Jackets

Pg 25 - 27

Accessories

Pg 28



**MCHTH**  
Hunting Tweed City Coat (Horse Brown)







**MJ2BCHTH**  
Hunting Tweed Jacket (Horse Brown)



**MWNRHTH**  
Hunting Tweed Waistcoat no revere (Horse Brown)



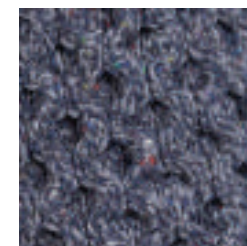


**MJBWSL1HTH**  
Shackleton Hunting Tweed Jacket  
(Horse Brown)

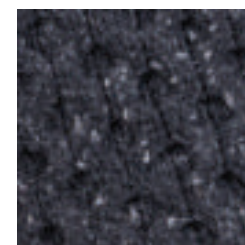
*\*see alternative sleeve colours available below*



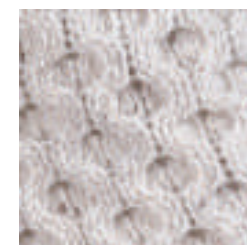
**SL1**  
ROCKY GROUND



**SL2**  
NAVY MARL



**SL3**  
CHARCOAL



**SL4**  
CHALK







**MWBWHTH**  
Hunting Tweed Bodywarmer (Horse Brown)



**MWBWHTG**  
Hunting Tweed Bodywarmer (Grey)





**MJ2BCHTG**  
Hunting Tweed Jacket (Grey)



**MWNRHTG**  
Hunting Tweed Waistcoat no revere (Grey)











**MJ2BSBHB**

Herringbone Tweed Jacket (Brown Herringbone)



**MWNRBHB**

Herringbone Waistcoat (Brown Herringbone)





**MJ2BCM Suit**  
Three Piece Suit  
(Mallard)



**MJ2BCM**  
Lighter Tweed Jacket (Mallard)



**MWNRM**  
Lighter Tweed Waistcoat no revere (Mallard)



**MCBNKL**  
City Coat  
(Brown Hopsack)



**MCMNKL**  
City Coat (Midnight Navy)



**MCNYJKT**  
Zipper Detail Coat (Navy)









**MJ2BCLTGN**

Classic Tweed Jacket (Light Green)



**MWLTGRNNR**

Classic Tweed Waistcoat no revere (Light Green)



**MWLTGRNWR**

Classic Tweed Waistcoat with revere (Light Green)



**MJBC**

Classic Tweed Jacket (Navy)



**MWNYNR**

Classic Tweed Waistcoat no revere (Navy)



**MWNYWR**

Classic Tweed Waistcoat with revere (Navy)







**MJ2BC**  
Classic Tweed Jacket (Brown Hopsack)



**MWBNNR**  
Classic Tweed Waistcoat no reverse (Brown Hopsack)



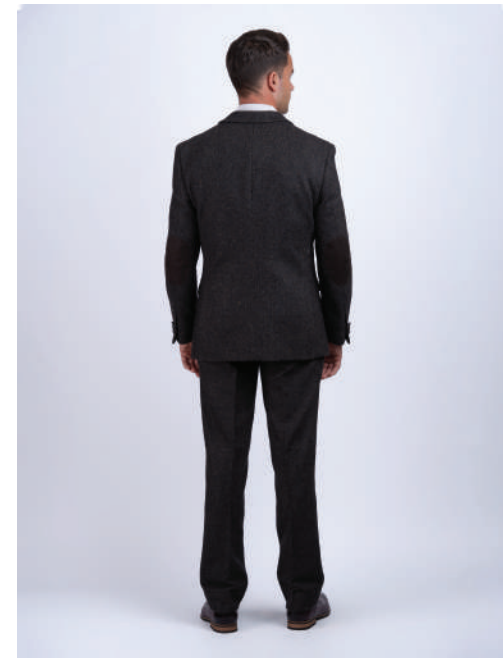
**MJ2BS**  
Slim Fit Tweed Jacket (Brown Hopsack)



**MTBNHS**  
Classic Tweed Trouser (Brown Hopsack)



**MJ2BC Suit**  
Three Piece Suit  
(Brown Hopsack)







**MJ2AC**

Three Button Tweed Jacket (Green Herringbone)



**MWGRNNNR**

Classic Tweed Waistcoat no revere (Green HB)



**MWGRNNWR**

Classic Tweed Waistcoat with revere (Green HB)



**MJ2LGC**

Classic Tweed Jacket (Light Grey)



**MWLTGRYNR**

Classic Tweed Waistcoat no revere (Lt Grey)



**MWLTGRNWR**

Classic Tweed Waistcoat with revere (Lt Grey)





**MJ2ASC**

Heritage Pocket Classic Tweed Jacket (Blue Herringbone)



**MWBLNR**

Classic Tweed Waistcoat no revere (Blue HB)



**MSGF**

Arthur Cotton Shirt



**MJ2AS**

Slim Fit Tweed Jacket (Blue Herringbone)



**MWBLWR**

Classic Tweed Waistcoat with revere (Blue HB)



**MTBLHB**

Classic Tweed Trousers (Blue Herringbone)





**MJ2ASC Suit**  
Three Piece Suit  
(Blue Herringbone)

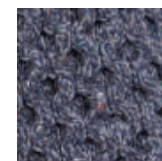




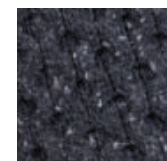
**MJBNBWSL1**  
**Shackleton Jacket**  
**(Brown Hopsack)**  
*\*see alternative sleeve colours available below*



**SL1**  
ROCKY GROUND



**SL2**  
NAVY MARL



**SL3**  
CHARCOAL



**SL4**  
CHALK





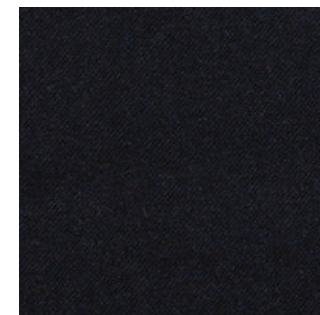


**MJGRNBWSL4**  
Shackleton Jacket  
(Green Herringbone)  
*\*see alternative sleeve colours available below*

All Shackletons also available in Light Green/Navy Tweed as below



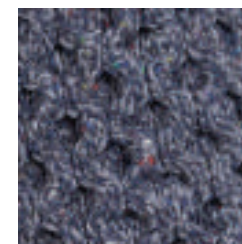
**MJLTGNBW-SL**  
LIGHT GREEN



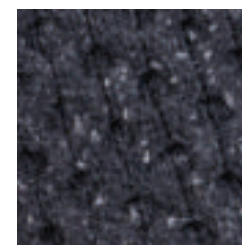
**MJNYBW-SL**  
NAVY



**SL1**  
ROCKY GROUND



**SL2**  
NAVY MARL



**SL3**  
CHARCOAL



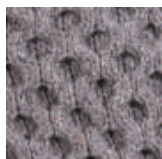
**SL4**  
NATURAL





**MJBKDBW-SL3**  
Shackleton Jacket  
(Black Check)

*\*see alternative sleeve colours available below*



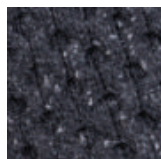
**SL1**

ROCKY GROUND



**SL2**

NAVY MARL



**SL3**

CHARCOAL



**SL4**

NATURAL



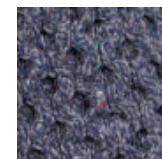
**MJBLBW-SL2**  
Shackleton Jacket  
(Blue Herringbone)

*\*see alternative sleeve colours available below*



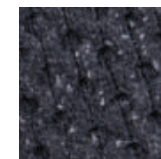
**SL1**

ROCKY GROUND



**SL2**

NAVY MARL



**SL3**

CHARCOAL



**SL4**

NATURAL







**MWGRYDKBW**

Padded Tweed Bodywarmer (Grey Diamond)



**MWLTGNBW**

Padded Tweed Bodywarmer (Light Green)

**MWBLKCHKBW**  
Padded Tweed Bodywarmer  
(Black Check)





**MWBLBW**  
Padded Tweed Bodywarmer (Blue Herringbone)



**MWGRNBW**  
Padded Tweed Bodywarmer (Green Herringbone)



**MWNYBW**  
Padded Tweed Bodywarmer (Navy)



**MWBNBW**  
Padded Tweed Bodywarmer (Brown Hopsack)







**MJC1LTNY**  
Cotton Jacket (Lt Navy)



**MJC1ST**  
Cotton Jacket (Stone)





**MJLN1SF**  
Plain Linen Jacket (Seafoam)



**MJLN1CA**  
Plain Linen Jacket (Caramel)







**MJNATLN1**  
Plain Linen Jacket (Natural)



**MJNYLN1**  
Plain Linen Jacket (Navy)





**IGSNGRYDK**  
Grey Diamond Snood



**MGBTBN**  
Tweed Bow Tie (Brown Hopsack)



**MGBTMGTW**  
Tweed Bow Tie (Green Herringbone)



**MGBTBLHB**  
Tweed Bow Tie (Blue Herringbone)







# CELTIC TWEED

6 Balbriggan Retail Park  
Glebe North, Dublin Road  
Balbriggan, Co Dublin  
K32 Y954  
IRELAND

Tel: +353 18416145  
Email: [design@celtictweed.ie](mailto:design@celtictweed.ie)  
[cathy@celtictweed.ie](mailto:cathy@celtictweed.ie)