



**CHANNEL JUMPER**  
FINEST QUALITY SINCE 1976

**2024 Look Book**







License No.  
GB0011 – 1

## **OUR WOOL STARTS ITS LIFE UPON THE FELS AND DOWNS OF THE BRITISH COUNTRYSIDE.**

The Traditional Guernseys we produce use Worsted wool which is hand graded for the finest quality and fibre thickness. This results in a sustainable, completely natural garment.

Our Guernsey knitwear uses 100% certified British wool ensuring a natural, sustainable and biodegradable garment that lasts for many years. The sheep from which our wool is sourced are sheared by licensed and trained professionals that uphold animal welfare and safety.

# The Traditional Guernsey



License No.  
GB0011 – 1

## THE TRADITIONAL GUERNSEY SWEATER HAS A STORY TO TELL.

The rib at the top of the sleeve is said to represent a sailing ship's rope ladder in the rigging, the raised seam across the shoulder a rope, and the garter stitch panel represents waves breaking upon the beach.

The traditional Guernsey sweater was originally a local fisherman's working garment, hence the diamond under the arm for ease of movement and

extra strength. It is knitted with close stitches from tightly twisted wool and this guarantees a long-lasting garment that keeps its shape. Traditional Guernsey sweaters were knitted by the womenfolk of the fishing and farming families of the islands, when many earned their living from the sea or the land. The distinctive pattern was handed down from generation to generation and the knitting skills passed on from mother to daughter.



# Burhou

The Original  
Guernsey Jumper  
*page 6*

# Casquets

Fine-Striped  
Guernsey Jumper  
*page 12*

# Ellis

Half Fine-Striped  
Guernsey Jumper  
*page 16*

# Puffin

The Wide-Striped  
Guernsey Jumper  
*page 20*





# Burhou

Pronounced [Boo-roo] on Alderney

The Original  
Guernsey Jumper

CJ01

Available in:  
Adult Sizes 34-56

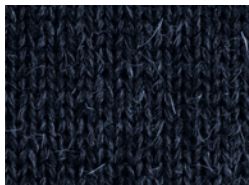
**Also available in merino wool**  
**Colours: Black, navy and ecru**

## Burhou

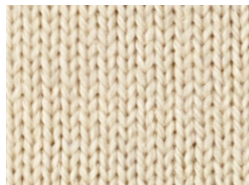
Oatmeal

CJ0114

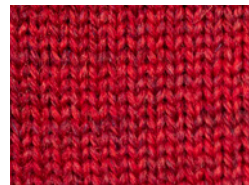
## 2024 Collection



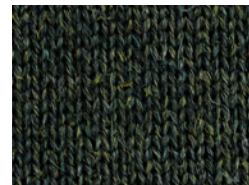
Dark Navy - CJ0102



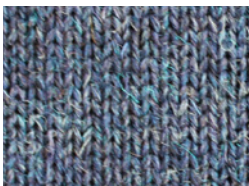
Aran - CJ0100



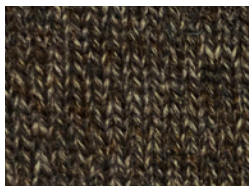
Cassat - CJ0126



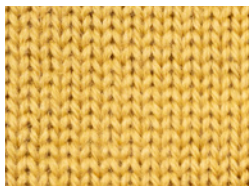
Loden Green - CJ0123



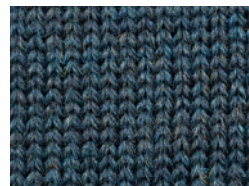
Denim - CJ0109



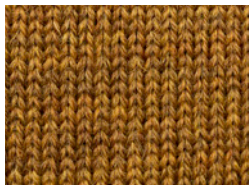
Derby Tweed - CJ0103



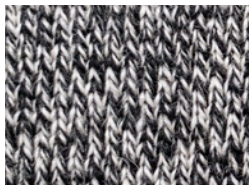
Sunflower - CJ0128



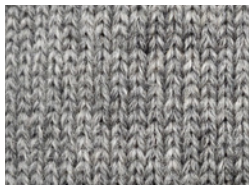
Mallard - CJ0120



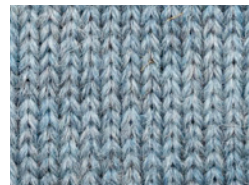
Harvest - CJ0115



Humbug - CJ0116

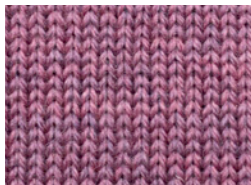


Smoke - CJ0129

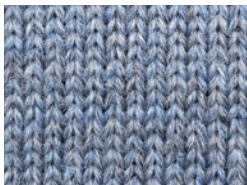


Summer Storm - CJ0119

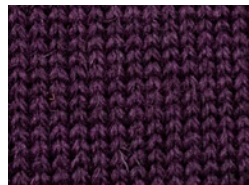




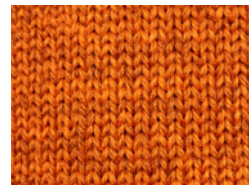
Lupin - CJ0112



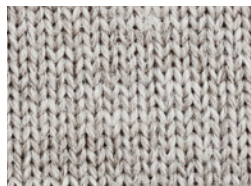
Kielder - CJ0131



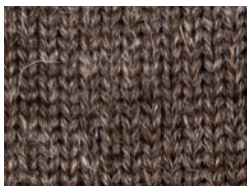
Foxglove - CJ0125



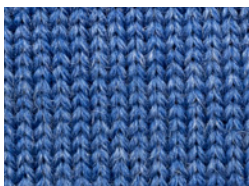
Burnt Orange - CJ0110



Oatmeal - CJ0114



Dark Grey Natural - CJ0132



Indigo - CJ0127

**Base Code: CJ01**

**Available in Sizes 34-56**

**Also available in merino wool**

**Colours: Black, navy and ecru**



**Burhou**  
Harvest  
CJ0115



**Burhou**  
Indigo  
CJ0127



**Burhou**  
Mallard  
CJ0120



**Burhou**  
Cassat  
CJ0126



# Casquets

The Fine-Striped Guernsey Jumper

CJ13

Available in Sizes 34-50

## Casquets

Smoke / Denim

CJ1307





**Detailing on Shoulders and Collar**



**Casquets**  
Navy / Cassat  
CJ1302

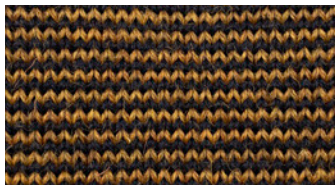


**Casquets**  
Harvest / Navy  
CJ1305

## 2024 Collection



Navy / Cassat - CJ1302



Harvest / Navy - CJ1305



Smoke / Denim - CJ1307

**Base Code: CJ13**  
**Available in Sizes 34-50**



# Ellis

Half Fine Striped Jumper

CJ12

Available in Sizes 34-50

## Ellis

Harvest / Summer Storm

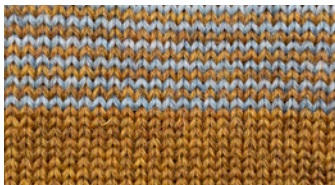
CJ1201





Detailing on Shoulders and Cuffs

## 2024 Collection



Harvest / Summer Storm - CJ1201



Oatmeal / Denim - CJ1214



Navy / Summer Storm - CJ1207



Summer Storm / Harvest - CJ1205



Foxglove / Lupin - CJ1209



Smoke / Cassat - CJ1211



Dark Grey Natural / Cassat - CJ1215

**Base Code: CJ12**  
**Available in Sizes 34-50**



**Ellis**

Dark Grey Natural / Cassat  
CJ1215



**Ellis**

Oatmeal / Denim  
CJ1214





# Puffin

The Wide-Striped  
Guernsey Jumper

CJ14  
Available in Sizes 34-54

**Puffin**  
Aran / Navy  
CJ1402





**Puffin**

Harvest / Navy  
CJ1408



**Puffin**

Smoke / Summer Storm  
CJ1412

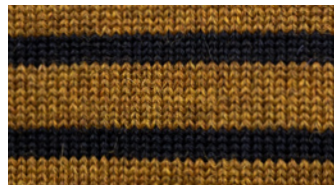
## 2024 Collection



Indigo / Aran - CJ1426



Oatmeal / Mallard - CJ1406



Harvest / Navy - CJ1408



Aran / Kingfisher - CJ1401



Smoke / Sunflower - CJ1411



Aran / Dark Navy - CJ1402



Kielder / Smoke - CJ1403



Foxglove / Smoke - CJ1409



Mallard / Smoke - CJ1410



Navy / Aran - CJ1425



Smoke / Summer Storm - CJ1412

**Base Code: CJ14**  
**Available in Sizes 34-54**



## **Puffin**

Smoke / Summer Storm  
CJ1412

# The Alderney

Originally, the Guernsey was the traditional jumper worn by island fisherman, regardless of which Island they came from. When Channel Jumper was established in 1976, the intention was to revive the Alderney sweater, a unique variation of the Guernsey with the Alderney Lion holding a sprig knitted into the front of the jumper. This was in keeping with the Island's coat of arms.

Looking back at the time that the original Alderney jumper first came into being, many other knitting patterns were also in use. The unique design of our Alderney incorporates both the original features of the Alderney plus additional patterns relating to the time of its conception. This distinguishes it even more so from the traditional Guernsey.





Alderney Emblem and Detailing



## 2024 Collection



**Base Code: CJ10**  
**Available in Sizes 38-52**



License No.  
GB0011 - 1



**Alderney**

Kielder

CJ1021



**Alderney**

Oatmeal

CJ1021





# The Jersey

Based on the original pattern for a Guernsey, a Jersey is identified by the pattern of an anchor knitted in relief as a crest and a crew neck collar.

## Jersey

Denim

CJ1119



## 2024 Collection



**Base Code: CJ11**  
**Available in Sizes 38-52**



License No.  
GB0011 - 1



# Cobbles

The Checkered  
Crew-neck Jumper

**Base Code: CJ08**  
**Available in Sizes S-XXL**

## Cobbles

Heather

CJ0805

2024 Collection



Base Code: CJ08  
Available in Sizes S-XXL



License No.  
GB0011 - 1



# Gannet

The Roll Neck  
Guernsey Jumper

**Base Code: CJ02**  
**Available in Sizes 34-56**

**Gannet**  
Charcoal  
CJ0230



## 2024 Collection



**Base Code: CJ02**  
**Available in Sizes 34-56**

**Also available in merino wool**  
**Colours: Black, navy and ecru**



License No.  
GB0011 – 1



# Longis

Pronounced [Lon-gee] on Alderney

Guernsey-style jumper  
in a soft, special blend  
of pure new wool

CJ17

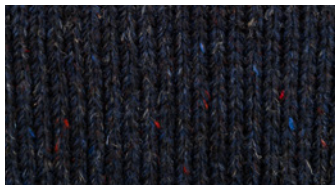
Available in Sizes 24-52

**Longis**

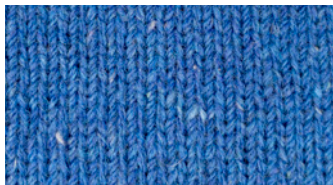
Orange

CJ1727

## 2024 Collection



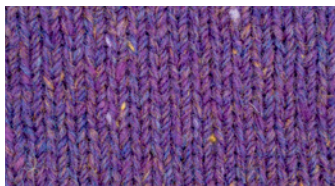
Navy Blue - CJ1702



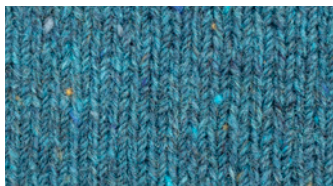
Ocean Blue - CJ1727



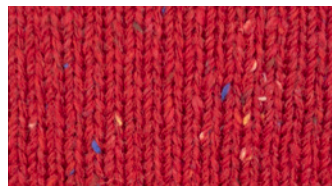
Pink - CJ1712



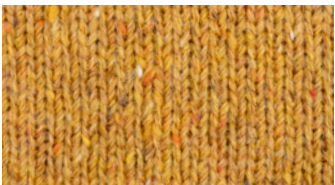
Purple - CJ1707



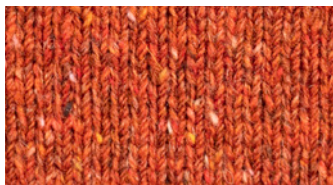
Turquoise - CJ1718



Red - CJ1726



Yellow - CJ1728



Orange - CJ1710

**Base Code: CJ17**  
**Available in Sizes 24-52**



# Saye

Pronounced [Soy] on Alderney

Casual jumper in a  
soft, special blend  
of pure new wool

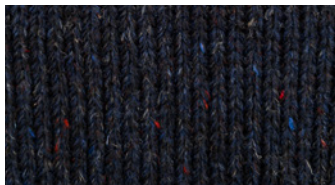
CJ19  
Available in Sizes XS–XXL

## Longis

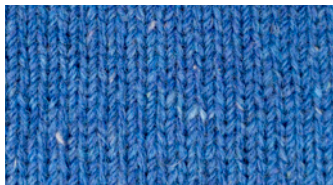
Red  
CJ1926



## 2024 Collection



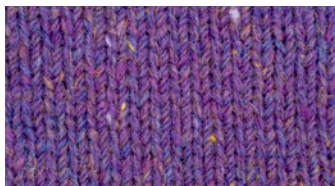
Navy Blue - CJ1702



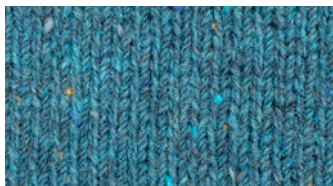
Ocean Blue - CJ1727



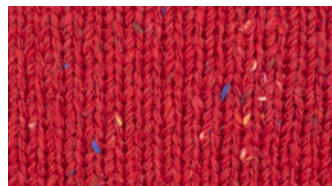
Pink - CJ1712



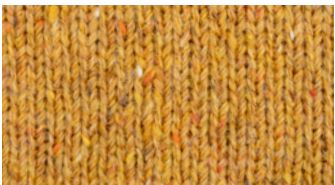
Purple - CJ1707



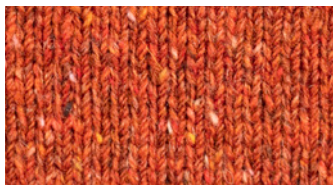
Turquoise - CJ1718



Red - CJ1726

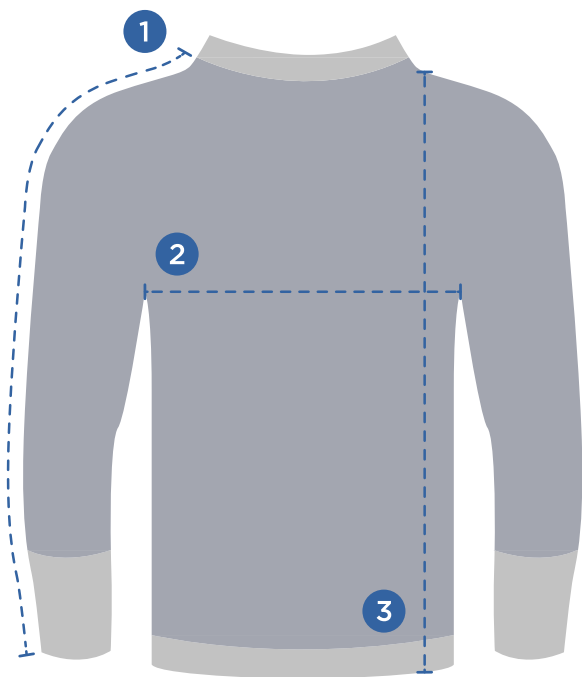


Yellow - CJ1728



Orange - CJ1710

**Base Code: CJ19**  
**Available in Sizes XS-XXL**



## FINDING THE PERFECT FIT

Take a jumper that you currently own and like the fit of (some people prefer their jumpers loose, others tight) and lay it on a flat surface. Measure the width of the jumper below the arms in inches. Then double this measurement to determine your size.

Even if you already have a Guernsey, we still recommend customers to remeasure as Guernseys can last many years and may grow ever so slightly with use. If the current fit is how you like to wear the jumper then this is what should be measured.

- 
- 1** Sleeve Length    **2** Chest    **3** Height

Burhou	24	26	28	30	32	34	36	38	40	42	44	46	48	50	52	54	56
Longis	24	26	28	30	32	34	36	38	40	42	44	46	48	50	52		
Casquets						34	36	38	40	42	44	46	48	50			
Ellis						34	36	38	40	42	44	46	48	50			
Puffin						34	36	38	40	42	44	46	48	50	52	54	
Alderney								38	40	42	44	46	48	50	52		
Jersey								38	40	42	44	46	48	50	52		
Corblets						34	36	38	40	42	44	46	48	50	52	54	56
Saye						XS		S		M		L		XL		XXL	
Cobbles								S		M		L		XL		XXL	
Gannets						34	36	38	40	42	44	46	48	50	52	54	56

Size						XS		S		M		L		XL		XXL	
	24	26	28	30	32	34	36	38	40	42	44	46	48	50	52	54	56
Chest (flat)	12” 30 cm	13” 33 cm	14” 36 cm	16” 41 cm	16” 41 cm	17” 43 cm	18” 46 cm	19” 48 cm	20” 51 cm	21” 53 cm	22” 56 cm	23” 58 cm	24” 61 cm	25” 64 cm	26” 66 cm	27” 69 cm	28” 71 cm
Body Length	15” 38 cm	20” 41 cm	17” 43 cm	20” 51 cm	20” 51 cm	26” 66 cm	27” 69 cm	27” 69 cm	27” 69 cm	28” 71 cm	28” 71 cm	29” 74 cm	29” 74 cm	29” 74 cm	30” 76 cm	30” 76 cm	31” 79 cm
Sleeve Length	12” 30 cm	13” 33 cm	14” 36 cm	17” 43 cm	17” 43 cm	24” 61 cm	24” 61 cm	25” 63.5 cm	25” 63.5 cm	27” 68.5 cm	27” 68.5 cm	28” 71 cm	28” 71 cm	29” 73.5 cm	29” 73.5 cm	30” 76 cm	31” 79 cm



Channel Jumper Ltd  
Braye Harbour  
Alderney, GY9 3XX  
Bailiwick of Guernsey  
Channel Islands

+44 1481 822 202  
[info@channeljumper.com](mailto:info@channeljumper.com)

[CHANNELJUMPER.COM](https://channeljumper.com)